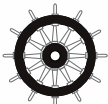


JAN-2000 ECDIS



Complies with new SOLAS regulations
MSC 232(82) performance standard for
ECDIS, effective from 1 January 2009.

– JRC's new high performance ECDIS represents a significant step change in terms of cost-effectiveness

- 18.1 or 19–inch high visibility displays**
- Simultaneous display vector and raster charts**
- Multiple and wide screen viewing**
- Flexible black box configuration**
- Cost effective installation**

JAN-2000

– performance features

Unique features

- The new JAN-2000 is a high-performance and fully type approved ECDIS system with excellent on-screen menus, which will greatly shorten most users' learning period.

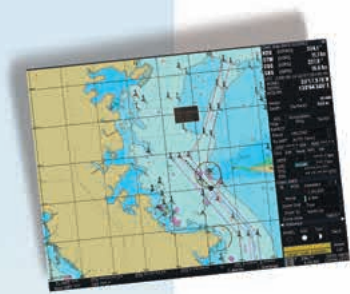
Cost-effective solution

The new JAN-2000 ECDIS system is fully type approved, and because of its controlled interface it is also highly cost-effective. It only has gyro, log, GPS 1 & 2 and AIS as standard. TCS and radar overlay is not possible.

This makes the JAN-2000 an economical and well-fitted ECDIS solution yet still integrates the high performance standard you would expect from JRC.

Standard

- Gyro
- Log
- GPS 1+2
- AIS



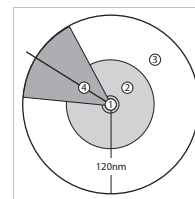
AIS targets

The AIS is an important key device used to indicate AIS target symbol and information on the ECDIS. These targets are very useful, as it provides the maneuvering conditions of other ships at a glance, allowing for safe and effective navigation. The name of

the vessels, and bearing, range, speed, length, heading and much more AIS target specifics from other ships are received and displayed. The AIS symbols are continuously displayed on-screen without the influence of the radar characteristics. The AIS targets are never shielded by ground, rain or cloud reflections, nor are they eliminated by adjustments of anti-sea or anti-rain clutter.



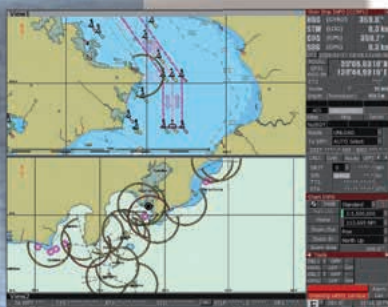
Also, it is easy to active, deactivate and switch between AIS target symbols. This simply can be done with an integrated AIS filter, prioritising the targets within a dedicated area.



1. vessels' position
2. ring area
3. sector area
4. heading area

Multi-view

Multiple and wide screen viewing is possible with the new JAN-2000. You can divide the chart screen into two sections, in which the same or different charts can be displayed, in a mixture of ways. In this field of view, it provides a 'look-ahead' capability, especially useful in coastal areas. With the wide screen view function, an additional screen in the display area, showing a segment of the chart, allows viewing at a glance.



JAN-2000

– developed for maximum ease of use

Grounding avoidance

As standard, the JAN-2000 integrates a grounding avoidance function, which protects vessels from collision and entering dangerous areas. This system allows real-time display of the ship's position on electronic charts, allowing to easily avoid routes for dangerous areas. You can simply make a crossing warning and it is possible to check safety contour lines and dangerous at the route planning stage.

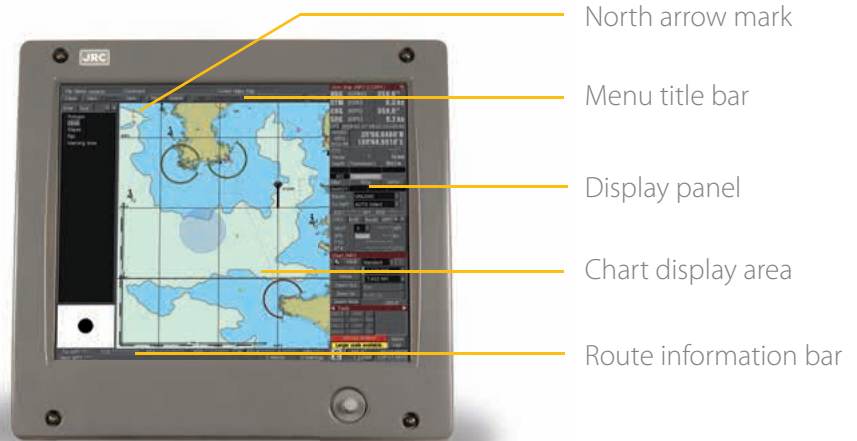
Backed up via LAN

The JAN-2000 ECDIS can directly be connected via LAN to JRC's VDR and S-VDR. This way, you can easily backup important data, without the need for additional interfaces.

Optimised viewing

The JAN-2000 18.1-inch and 19-inch colour display is able to show bright, high-resolution imagery. With a press of a button, the screens' brightness can automatically be adjusted to the most optimal condition.

You can also select from multiple background modes, a practical feature which facilitates a clear sight, this in view of the ever changing lightening conditions on the bridge.



JRC StarNetwork™

JRC has been providing sales and support of products since 1915. Today, JRC offers comprehensive assistance through its organisation, in partnership with a worldwide StarNetwork™ of over 270 fully trained and qualified partners and agents, assisting you 24 hours a day, 7 days a week and 365 days a year.



onomically configured

JAN-2000

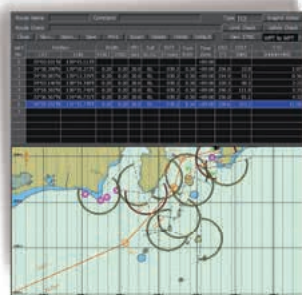
– system flexibility

Flexible black box configuration

The processor unit is the heart of the JAN-2000, and shares the same simple configuration as the current JAN-701B/JAN-901B ECDIS series, contributing to an enhanced system configuration. It is also possible to install our type approved 19-inch LCD display as alternative.

Interfaces

On the back of the processor you will find four USB ports, a DVD drive. Simply connect a printer, USB storage device for saving and reading files, or you can plug in a C-Map dongle for your charts.



Route planning with table editor while displaying waypoints

Advanced route planning

The advanced nature of JRC's new JAN-2000 ECDIS system allows route planning in different ways. Either plan your route by using the table editor, while displaying current waypoint or graphically draw your next waypoint on the chart. Editing the route is just as simple as inserting. Dedicated menus are readily available to assist the mariner in effective route planning. Not only can you save the routes, but import favourite or commonly used files, even from previously ECDIS models, using industry-standard CSV format.

During the voyage, you can add an alternative route, which can be displayed simultaneously. You can move, insert, add and delete waypoints instantly and easily exchange the alternative route with route in progress, at your own convenience.



Man OverBoard

Some items could strike you on the vessel, a slippery deck or unexpected movement of the vessel are situations in which a person may possibly fall of the vessel. The JAN-2000 integrates a single-press Man OverBoard (MOB) operation. Instantly, a dedicated symbol arises on the screen, providing a range detailed info such as positioning, bearing, range and time till arriving at MOB. This emergency system enables immediate and accurate search and rescue efforts.



What's standard in the box?

	Which cables?	Std.
1. Display ¹		
2. Keyboard	Display to processor	2 m
3. Processor	Keyboard to processor	2 m
4. Cables		
5. Spare parts		
7. eToken for C-Map Ed.3		
8. Manual (English)		

¹ 18.1-inch standard (including bracket)

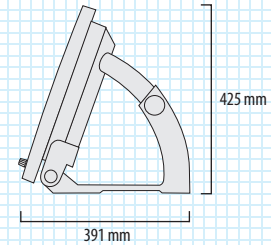
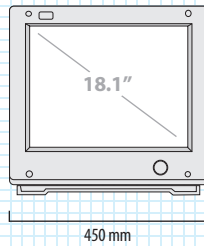


JAN-2000

– dimensions and mass

Dimension drawings - Display

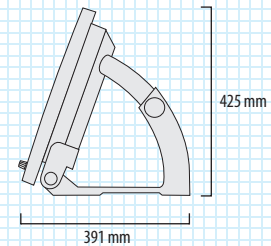
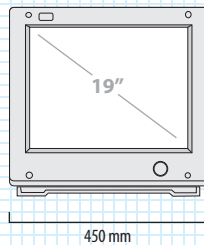
NWZ-147-AC MASS 14,5 kg



cutout for panel mount height 319,6 mm, width 416 mm, depth 80 mm

Dimension drawings - Display

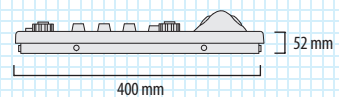
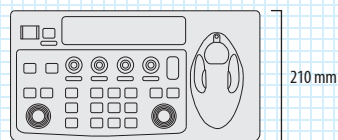
NWZ-173-E MASS 12,1 kg



cutout for panel mount height 319,6 mm, width 416 mm, depth 80 mm

Dimension drawings - Keyboard

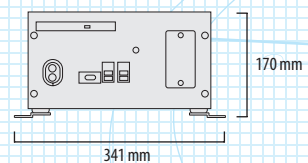
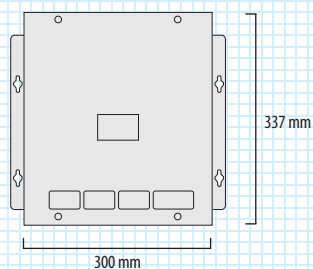
NCE-7721C MASS 3,5 kg



cutout for panel mount height 94 mm, width 384 mm, depth 34 mm

Dimension drawings - Processor

NDC-2000 MASS 10,5 kg



JAN-2000

– specifications

Model		JAN-2000
IMO compliant		✓
General		
Power supply	100V to 115V, 200V to 230V AC ±10%, 60/50Hz ±5%	
Power consumption	160VA max. (120VA typ.)	
Display		
Size	18.1 inch or 19 inch colour LCD display	
Resolution	1280 by 1024 pixels (SXGA)	
Bearing indication	north-up / course-up (simultaneously in multi view)	
Presentation mode	true / relative / free motion	
Multi display areas	2 (longitudinal, transverse, picture in picture)	
Scale	1:1.000 up to 1:75.000.000	
Range	0.125 - 120 NM	
Vector charts	ENC S-57 Ed3.0/3.1, S-63 (ENC, AVCS security scheme) C-Map Ed.3	
Raster charts	ARCS Navigator service / Skipper service	
Route planning		
Input	graphical or numerical	
Safety check	grounding, obstruction, dangerous areas	
Import/export format	CSV	
Monitoring		
Plotting	Own vessel position and track	
TT (ARPA) targets	200	
AIS tracking	300 (activated 100 + sleeping 200)	
AIS class	class A + class B	
AIS/ARPA alarm	CPA/TCPA	
Chart management		
Updating	semi-auto / manual (available via ChartCo)	
Data correction	available	
Functions		
Route planning	route editing, alternative route editing, safety check of planned route	
Navigation monitoring	own ship's position, crossing safety contour, approaching obstruction and prohibited areas, cross track error, arrival at waypoint, off course, dragging anchor	
Operation	multi-view, scrolling, data recording (up to 90 days), printing of screen/route/logbook	
Interfaces		
IEC61162-1	RX 4ch, TX 3ch	
LAN	built-in 10/100 Mbps	
Copying route	USB	
Optional items		
Display 19-inch LCD	NWZ-173-E	
NSK unit	NCT-4106A	
Serial add-in board	NQD-2888	
PC mini keyboard	PCP-ACK-595 US-PS2-R	
PC trackball	ST-45UPI	
Manual chart installation (English)	7ZPNA4111	

All specifications are subject to change without notification.

• Specifications may be subject to change without notice.

For further information, contact:



Since 1915

Japan Radio Co., Ltd.

URL <http://www.jrc.co.jp/eng/>

Main Office: Fujisawa bldg. 30-16, Ogikubo 4-chome
Suginami-ku, Tokyo 167-8540, Japan
Telephone: +81-3-6832-1816
Facsimile: +81-3-6832-1845

Overseas Branches : Seattle, Amsterdam, Athens, Manila
Liaison Offices : Taipei, Jakarta, Singapore, Hanoi,
Shanghai, Hamburg, New York