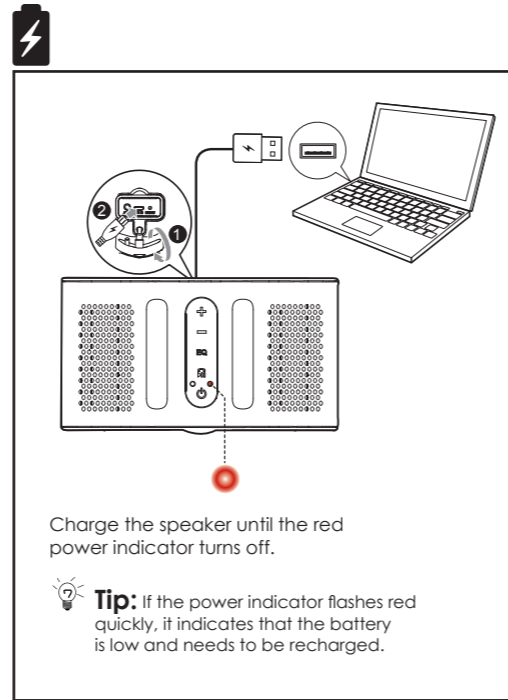
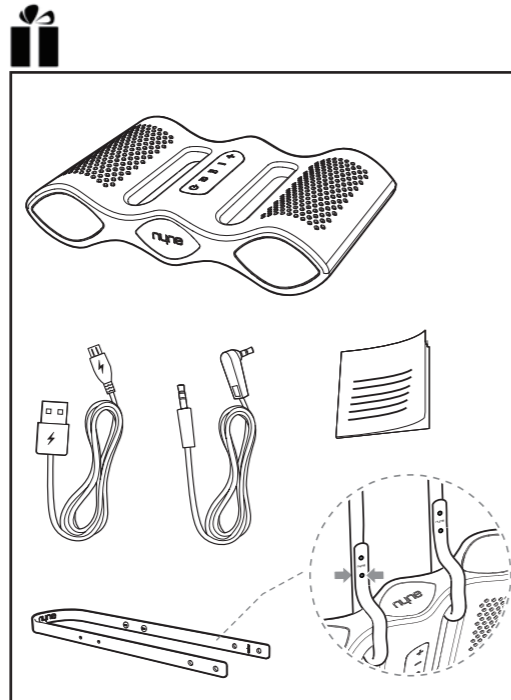


# nyne Aqua

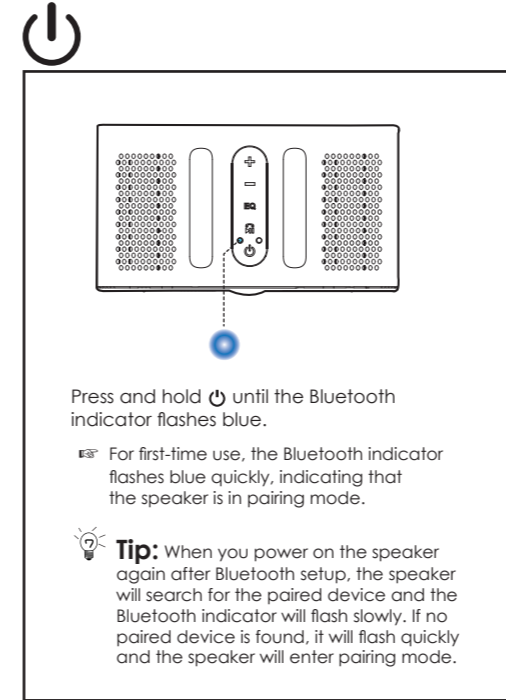
- |    |  |    |                                   |
|----|--|----|-----------------------------------|
| CS | Přenosného reproduktoru Bluetooth          | LT | Garsiakalbio vartotojo vadovas    |
| ET | Kaasaskantav Bluetooth kõlar               | PL | Przenośnego głośnika Bluetooth    |
| GE | für einen portablen Bluetooth-Lautsprecher | RO | Difuzor portabil Bluetooth        |
| HU | Rövidített használati útmutató             | SK | Prenosného reproduktora Bluetooth |
| LV | Pārnēsājams Bluetooth skaļrunis            |    |                                   |
| CS | Stručná příručka uživatele                 | LT | Sutrupintas nešiojamojo bluetooth |
| ET | Lühike kasutusjuhend                       | PL | Skrócony Przewodnik Użytkownika   |
| GE | verkürztes Benutzerhandbuch                | RO | Ghid de referință rapidă          |
| HU | Hordozható Bluetooth hangszóró             | SK | Stručná príručka uživatela        |
| LV | Sāīsināta Lietotāja Rokasgrāmata           |    |                                   |

nyne.com CE 2200



Charge the speaker until the red power indicator turns off.

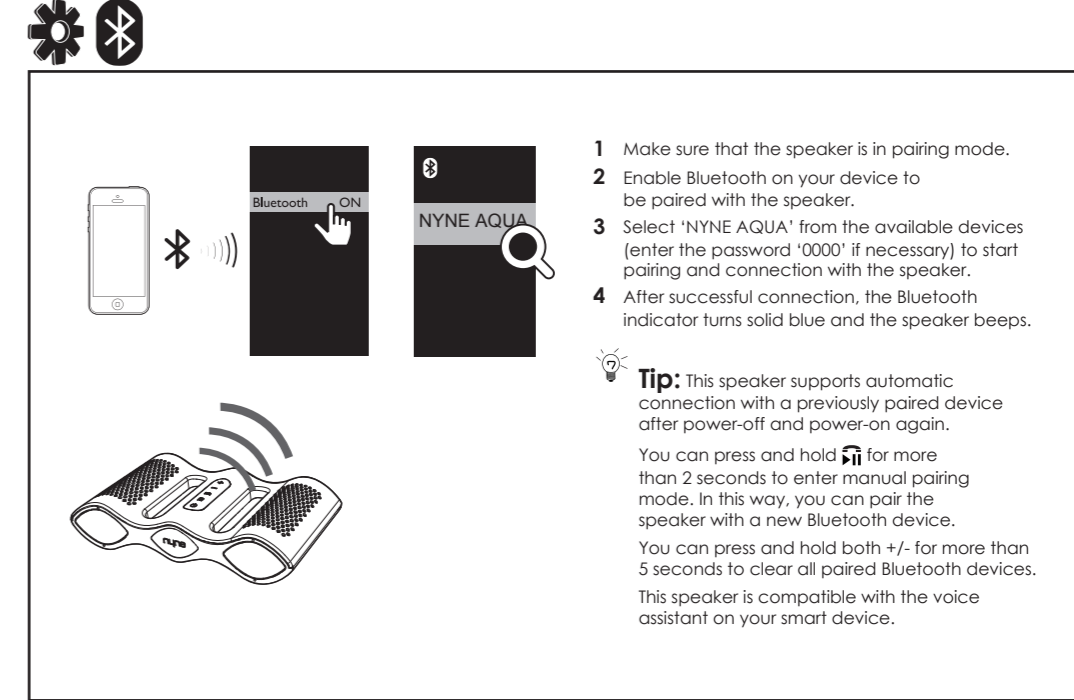
**Tip:** If the power indicator flashes red quickly, it indicates that the battery is low and needs to be recharged.



Press and hold **⏻** until the Bluetooth indicator flashes blue.

For first-time use, the Bluetooth indicator flashes blue quickly, indicating that the speaker is in pairing mode.

**Tip:** When you power on the speaker again after Bluetooth setup, the speaker will search for the paired device and the Bluetooth indicator will flash slowly. If no paired device is found, it will flash quickly and the speaker will enter pairing mode.



- 1 Make sure that the speaker is in pairing mode.
- 2 Enable Bluetooth on your device to be paired with the speaker.
- 3 Select 'NYNE AQUA' from the available devices (enter the password '0000' if necessary) to start pairing and connection with the speaker.
- 4 After successful connection, the Bluetooth indicator turns solid blue and the speaker beeps.

**Tip:** This speaker supports automatic connection with a previously paired device after power-off and power-on again. You can press and hold **⏻** for more than 2 seconds to enter manual pairing mode. In this way, you can pair the speaker with a new Bluetooth device. You can press and hold both **+**/**-** for more than 5 seconds to clear all paired Bluetooth devices. This speaker is compatible with the voice assistant on your smart device.



QU-G-Aqua-06-23-2014-V1.0

All registered and unregistered trademarks are  
property of their respective owners.  
Nyne Multimedia Inc.  
All rights reserved.

# nyne



Play music on your device paired and connected with the speaker.

**Note:** This speaker supports automatic connection with a previously paired device after power-off and power-on again.

During music play:

- Press +/- to adjust volume.
- Press and hold +/- to skip to the previous or next song.
- Press to pause or resume music play.
- Press to select your favorite preset sound effect: FLAT, ROCK, POP or JAZZ.
- Press and hold for more than 3 seconds to return to FLAT at any time.
  - ☞ The Bluetooth indicator flashes blue once when you select a sound effect other than FLAT.
  - ☞ The Bluetooth indicator flashes blue twice when you select FLAT.

When you make a call or there is an incoming call, you can use the speaker as a speaker phone.

- When there is an incoming call, you can press to receive the call or press twice to reject the call.
- During a call, you can press to end the call.
- In BT mode, you can press twice to access the voice assistant on your smart device. To exit the voice assistant, press twice again.

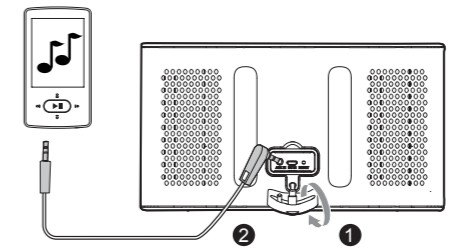
**Tips:** Music play is paused during a call and resumed automatically when the call ends.

You can press and hold to disconnect the current Bluetooth connection.

If no source is detected, the button does not function.



AUX IN



- 1 Connect an auxiliary audio device to the speaker through the supplied 3.5mm audio cable.
- 2 Play and control music on the audio device, and use +/- on the speaker to adjust volume if necessary.

**Tips:** In AUX IN mode, you can press to mute sound output from the speaker. When the 3.5mm audio cable is plugged in, the speaker switches to AUX IN mode automatically. When it is unplugged, the speaker switches back to Bluetooth mode.

The button also functions in AUX IN mode.

The voice assistant function does not work in AUX IN mode.

In case of abnormality, you can hold the **RESET** button to reset the speaker.